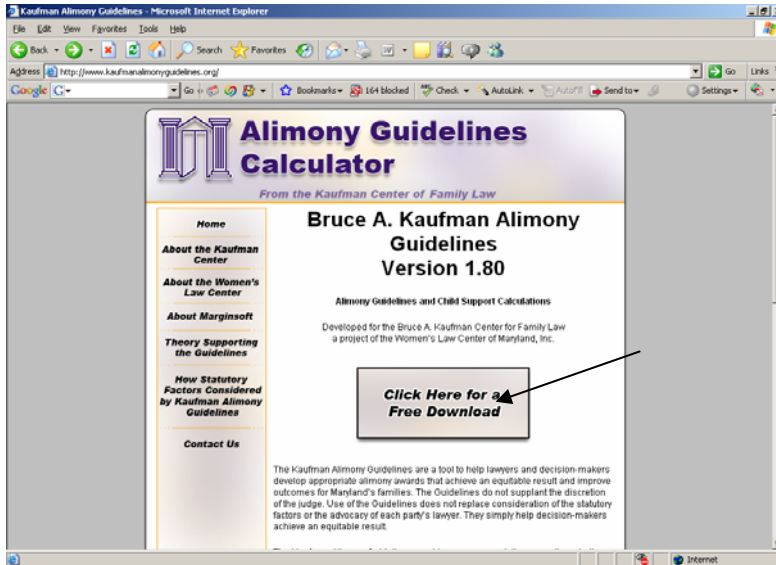
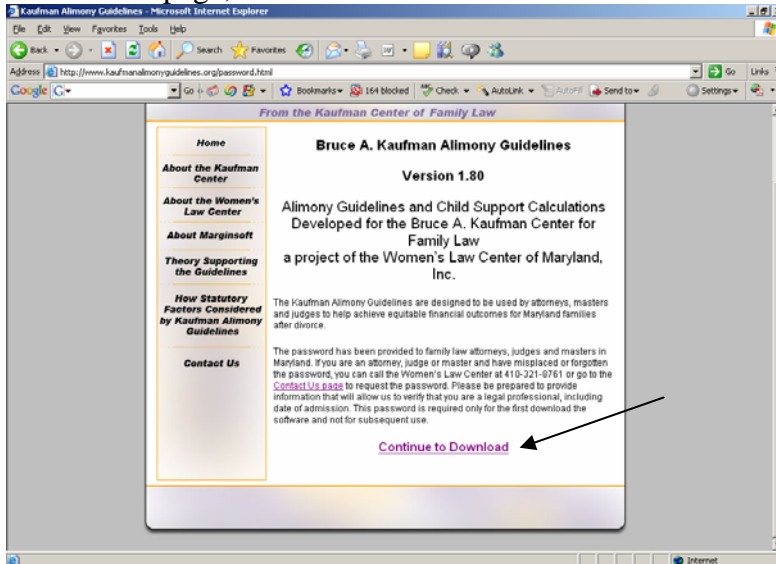


Instructions for Downloading the Kaufman Alimony Guidelines

From the home page of www.kaufmanalimonyguidelines.org, click the box that reads **Click Here for a Free Download**.



On the next page, click **Continue to Download**.



When the dialog box opens, enter the user name and password: **kaufman**. *Note that the password is case sensitive; use all lower case. Click **OK**.



Connect to www.kaufmanalimonyguidelines.org

intake

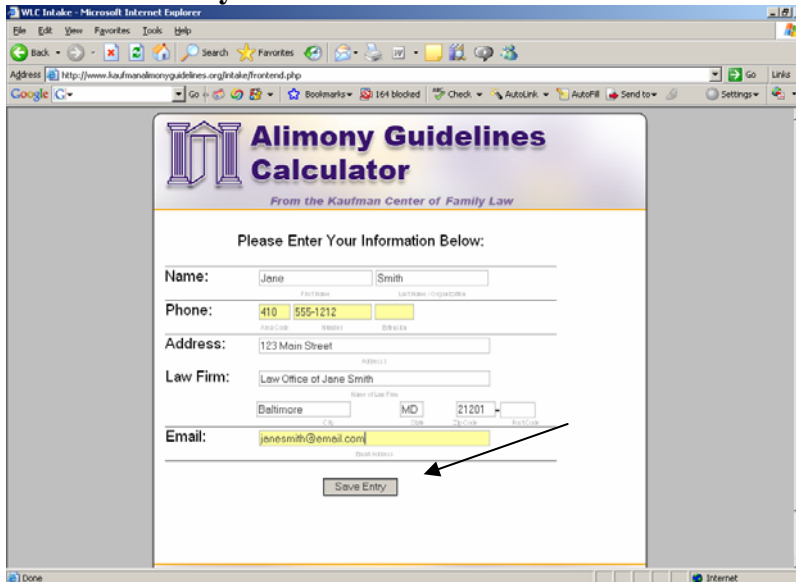
User name: kaufman

Password: ●●●●●●

Remember my password

OK Cancel

Enter your name and contact information in the form as requested. *Note: Fill in ALL blanks. If you leave a field blank, you will be asked to re-enter all of your information. Click **Save Entry**.



WLC Intake - Microsoft Internet Explorer

Address http://www.kaufmanalimonyguidelines.org/intake/entered.php

Alimony Guidelines Calculator

From the Kaufman Center of Family Law

Please Enter Your Information Below:

Name: Jene Smith

Phone: 410 555-1212

Address: 123 Main Street

Law Firm: Law Office of Jene Smith

Baltimore MD 21201

Email: jenesmith@email.com

Save Entry

You will be prompted to re-enter the user name as password. Enter the user name and password: **kaufman**. *Note that the password is case sensitive; use all lower case.



Connect to www.kaufmanalimonyguidelines.org

intake

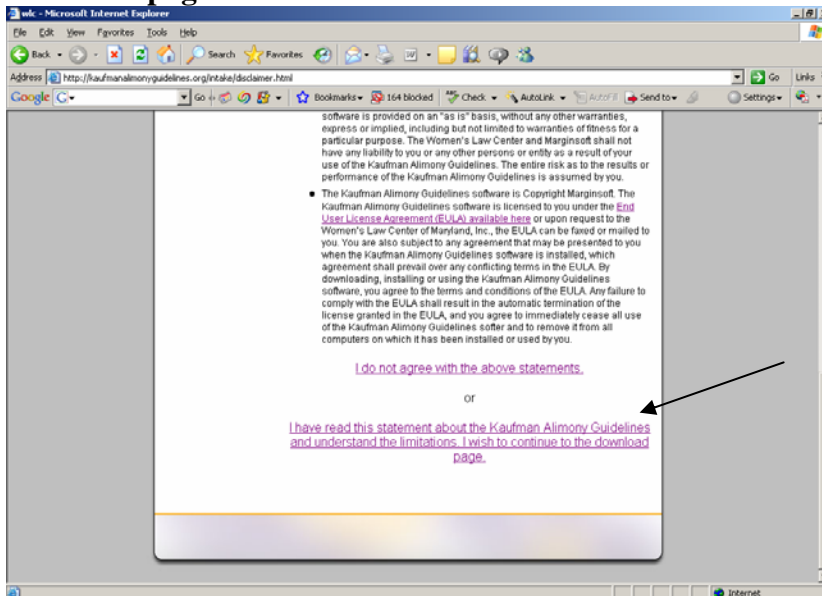
User name:

Password:

Remember my password

OK Cancel

Read the Terms of Use, Disclosure and Disclaimers. After reading, determine if you accept the terms of use. If so, click on **I have read this statement about the Kaufman Alimony Guidelines and understand the limitations. I wish to continue to the download page.**



software is provided on an "as is" basis, without any other warranties, express or implied, including but not limited to warranties of fitness for a particular purpose. The Women's Law Center and Marginsoft shall not have any liability to you or any other persons or entity as a result of your use of the Kaufman Alimony Guidelines. The entire risk as to the results or performance of the Kaufman Alimony Guidelines is assumed by you.

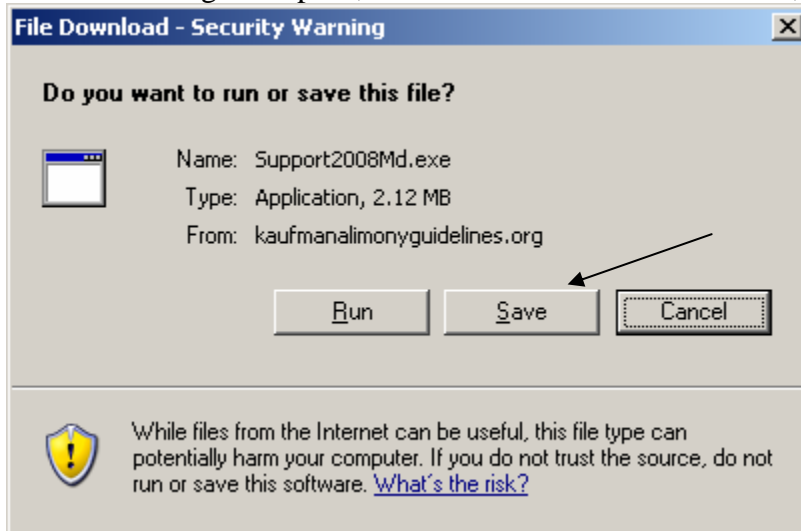
- The Kaufman Alimony Guidelines software is Copyright Marginsoft. The Kaufman Alimony Guidelines software is licensed to you under the [EULA User License Agreement \(EULA\)](#) available [here](#) or upon request to the Women's Law Center of Maryland, Inc., the EULA can be faxed or mailed to you. You are also subject to any agreement that may be presented to you when the Kaufman Alimony Guidelines software is installed, which agreement shall prevail over any conflicting terms in the EULA. By downloading, installing or using the Kaufman Alimony Guidelines software, you agree to the terms and conditions of the EULA. Any failure to comply with the EULA shall result in the automatic termination of the license granted in the EULA, and you agree to immediately cease all use of the Kaufman Alimony Guidelines software and to remove it from all computers on which it has been installed or used by you.

[I do not agree with the above statements.](#)

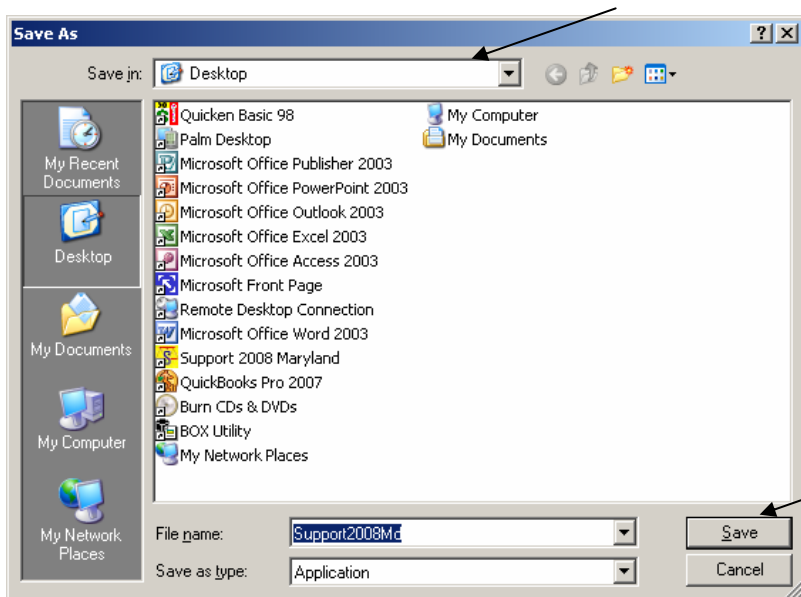
or

[I have read this statement about the Kaufman Alimony Guidelines and understand the limitations. I wish to continue to the download page.](#)

When the dialog box opens, click on **Save**. *Do not click **Run***; you will get an error.



A dialog box will open asking where you want to save the file. The default location is **Desktop**. To easily locate the software when the download is finish, we recommend leaving the setting to at **Desktop**. *If your computer does not default to the desktop, you can select the desktop from the dropdown menu at the top of the box.* Click **Save**.



The software will download to your Desktop. Minimize your web browser and go to your Desktop. Locate the software icon that says **Support2008Md**. It looks like this:



Double click on this icon. It will open a dialog box. Click **Run**.



The program will run and install the software on your computer. When the installation is complete, an icon will appear on your desktop for the *Kaufman Alimony Guidelines*. It will look like this:



Double click this icon to launch the software.